

SAMSUNG

Free Joint Multi (FJM)

Plays well with others.

The Free Joint Multi (FJM) multi-zone residential and light commercial systems give your customers even more to love! With higher capacities, higher efficiency ratings, and five compatible indoor unit options, you're giving customers more ways to take control of their comfort.



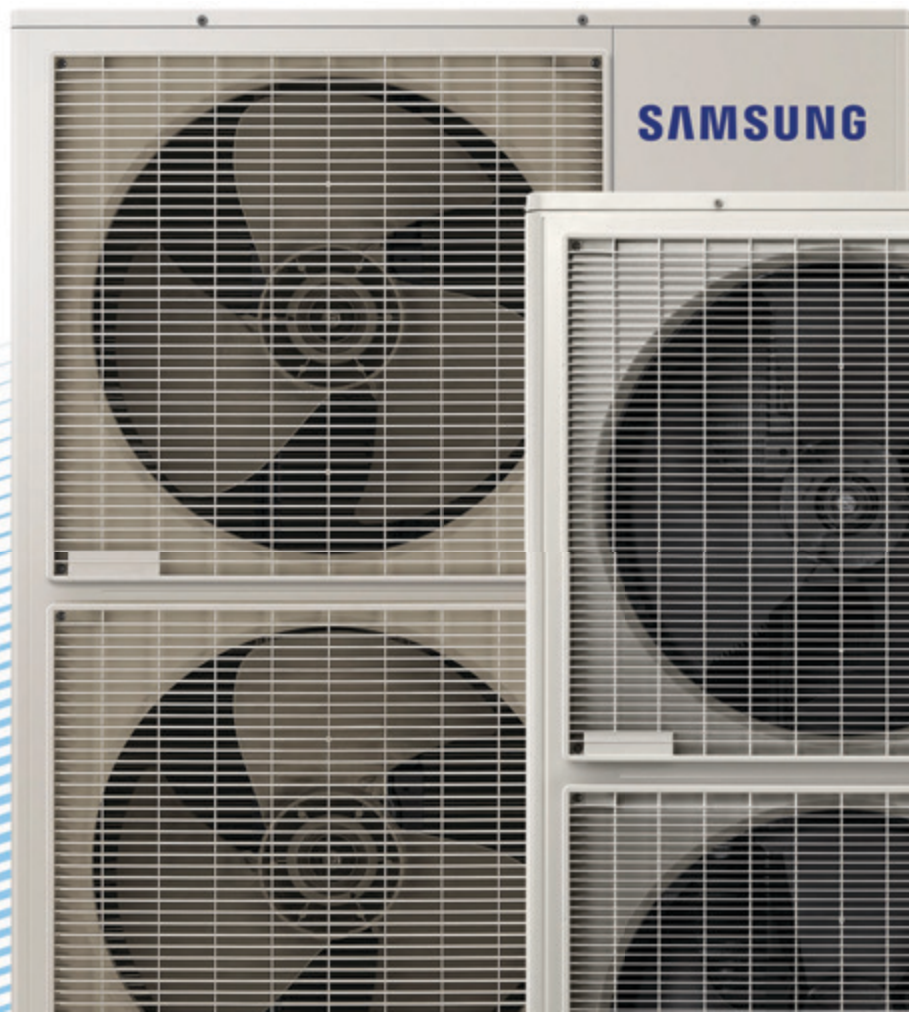
Product Registration Required
Conditions Apply



HVAC. Built brave.

© 2020 Samsung HVAC

48K Btu/h Standard

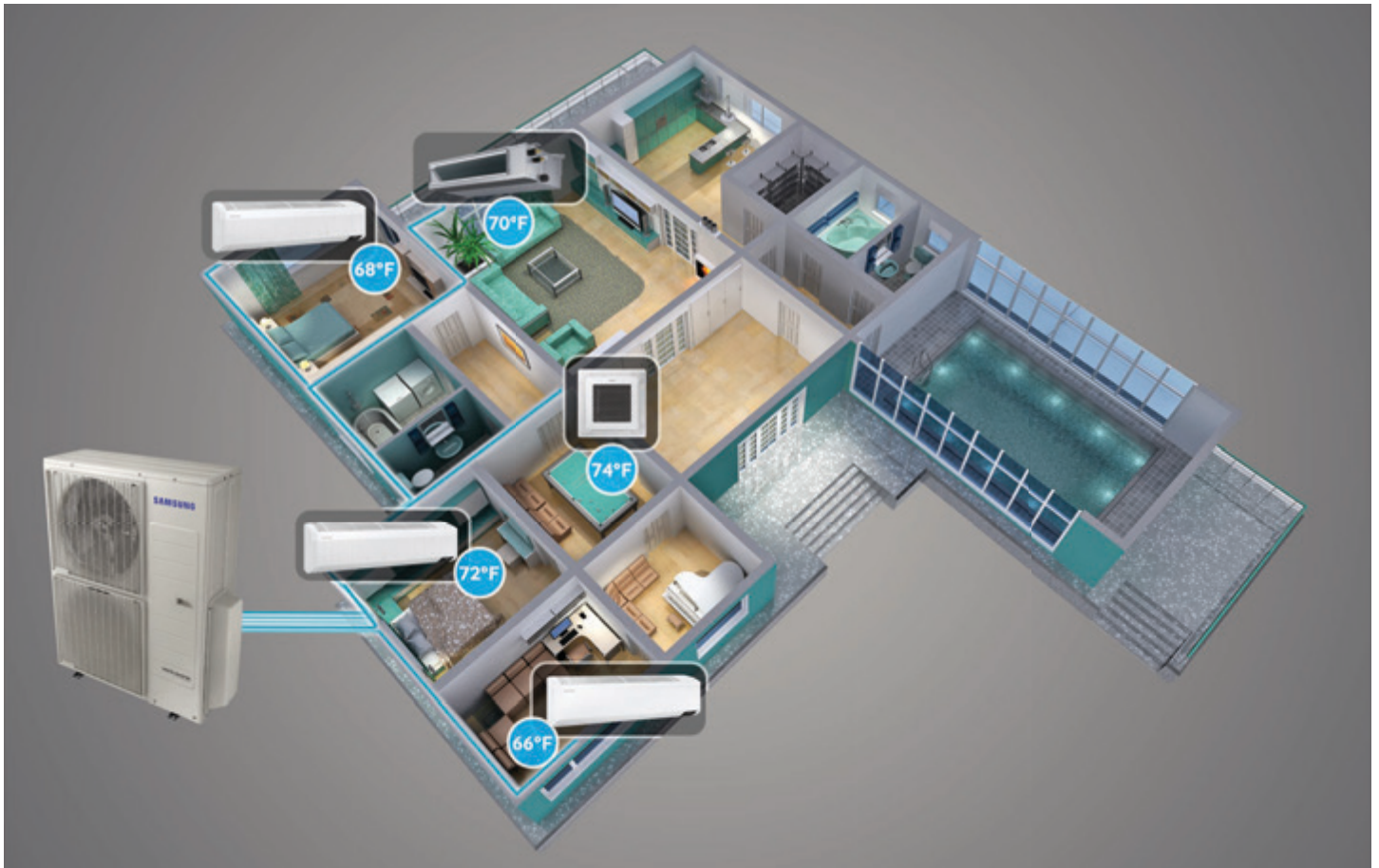


Max Heat®

36K Btu/h Max Heat®

Commander in chief

This versatile system is the best solution for residential and light commercial buildings requiring a flexible, efficient, and reliable air conditioning system.



Multiple choice

Each option provides additional flexibility when installing a system that requires more than one zone of comfort, without adding parts, installation, and added costs of several outdoor units.



Outdoor Units

FJM



- Available capacities: 18K, 24K, 36K, and 48K Btu/h
- SEER up to 19.7
- HSPF up to 10.3
- Supports 2 to 5 indoor units

FJM Max Heat®



- Available capacities: 20K, 24K, 30K, and 36K Btu/h
- SEER up to 20.0
- HSPF up to 11.0
- Supports 2 to 4 indoor units
- 100% heating performance at 5°F (-15°C) with high heating output at -13°F (-25°C)
- Integral base pan heater as standard

Features:

- Simplified connection to central control with direct connection to R1/R2 at the outdoor unit.
- Option settings allow system configuration as cooling or heating, cooling only, or heating only.
- "Home run" piping to each indoor unit
- Compatible with NASA communication protocol controllers
- Twin BLDC compressor for high efficiency, low noise, and vibration.
- One button auto addressing for simple system setup when completing installation



Indoor Units

Wind-Free™* Mini 4-Way Cassette

- Available capacities: 9K, 12K, and 18K Btu/h
- Wind-Free™* Cooling technology maintains the desired temperature and eliminates cold drafts by delivering air through micro holes on the unit's fascia panel when the louvers are closed, producing a dispersed and gentle flow of air defined as "still air."
- The panel is designed to fit in a standard 2x2 feet ceiling grid without interfering with adjacent ceiling tiles, lights, or sprinkler systems.
- The four louver blades can be individually set at the same or different angles within a 32-65° range.



Motion Detection Sensor (MDS) sold separately

Console

- Available capacities: 9K, 12K, 15K, and 18K Btu/h
- The console unit can be installed sitting on the floor or hanging low on a wall, making it a great option for replacing a radiator in order to provide both heating and cooling in almost any space.
- Delivers cool air from the upper outlet while in cooling mode and warm air from the upper and lower outlet^ while in heating mode, resulting in more coverage in less time.



*The Wind-Free™ unit delivers an air current that is under 0.15 m/s while in Wind-Free™ mode. Air velocity that is below 0.15 m/s is considered "still air" as defined by ASHRAE 55-2013 (American Society of Heating, Refrigerating, and Air-Conditioning Engineers).

^The lower outlet supports manual adjustment only.

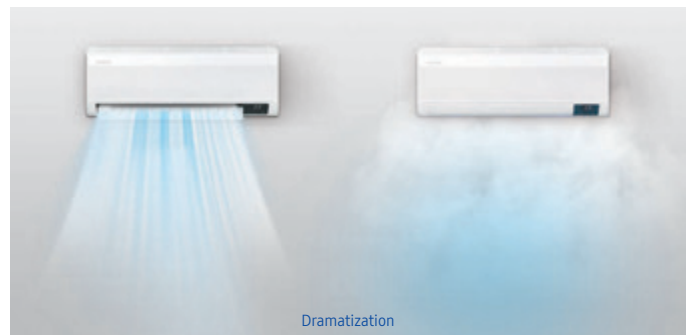
Slim Duct

- Available capacities: 9K, 12K, and 18K Btu/h
- Single fan motor with three fan speeds and auto setting
- Integral condensate pump with float switch as standard
- 0.2" WC maximum static pressure



Wind-Free™* 2.0

- Available capacities: 7K, 9K, 12K, 15K, 18K, and 24K Btu/h
- 9K, 12K, 18K, and 24K Btu/h indoor units are compatible with RAC single zone outdoor units and the new FJM outdoor units. 7K and 15K Btu/h indoor units are compatible with FJM systems only.
- Wind-Free™* Cooling technology maintains the desired temperature and eliminates cold drafts by delivering air through micro holes on the unit's louver and fascia panel when the louver is closed, producing a dispersed and gentle flow of air defined as "still air."
- Wi-Fi enabled for control and monitoring via Samsung's SmartThings app†.
- Our new indoor unit design incorporates more interlocking components in place of threaded fasteners to reduce the time and effort it takes to install and service a system.



Quantum 2.0

- Available capacities: 7K, 9K, 12K, 15K, 18K, and 24K Btu/h
- 9K, 12K, 18K, and 24K Btu/h indoor units are compatible with RAC single zone outdoor units and the new FJM outdoor units. 7K and 15K Btu/h indoor units are compatible with FJM systems only.
- Wi-Fi enabled for control and monitoring via Samsung's SmartThings app†.
- Our new indoor unit design incorporates more interlocking components in place of threaded fasteners to reduce the time and effort it takes to install and service a system.



*The Wind-Free™ unit delivers an air current that is under 0.15 m/s while in Wind-Free™ mode. Air velocity that is below 0.15 m/s is considered "still air" as defined by ASHRAE 55-2013 (American Society of Heating, Refrigerating, and Air-Conditioning Engineers).

†Available for download on the Google™ Play store and App Store®. A network connection is required. Samsung application account is necessary.

Controls

Samsung offers a wide range of control solutions to meet the needs of almost any project.



Wireless Remote Controller

- ON/OFF
- Temperature setting
- Operation mode
- Fan speed
- Filter reminder setting
- Single event timer setting
- Wind-Free™* mode



Touchscreen Wired Controller

- ON/OFF
- Temperature setting
- Fan speed
- Touchscreen
- LCD backlit screen
- Built-in room temperature sensor
- Louver position setting
- IR receiver
- Wind-Free™* mode



Advanced Wired Controller

- ON/OFF
- Color screen
- Dual set-point**
- Built-in room temperature sensor
- 7-day programmable scheduling
- Occupied/unoccupied and setback settings
- IR receiver
- Louver position setting
- Wind-Free™* mode
- Motion Detection Sensor (MDS) indirect/direct airflow control

Additional parts may be required. Please refer to technical documents for all control options, features, and specifications.



Lock box shown is an optional 3rd party accessory

*The Wind-Free™ unit delivers an air current that is under 0.15 m/s while in Wind-Free™ mode. Air velocity that is below 0.15 m/s is considered "still air" as defined by ASHRAE 55-2013 (American Society of Heating, Refrigerating, and Air-Conditioning Engineers).

**For supported units/systems

Wi-Fi Adapter

Samsung's Wi-Fi Adapter¹ allows for remote control of Samsung FJM indoor units² through the SmartThings app[†]. The app allows users to remotely regulate temperature, adjust settings, receive real-time updates about performance and daily energy usage, as well as troubleshoot solutions when a repair is needed.



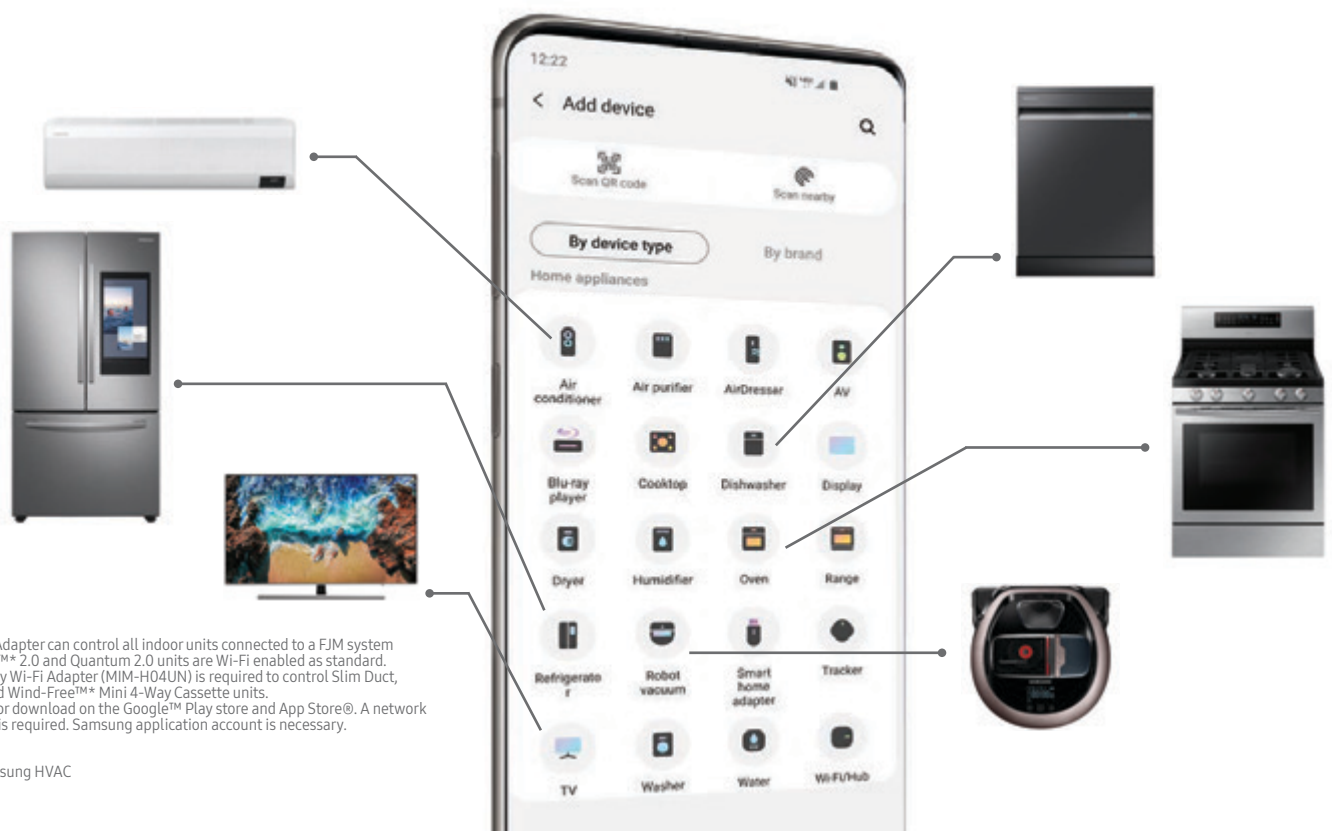
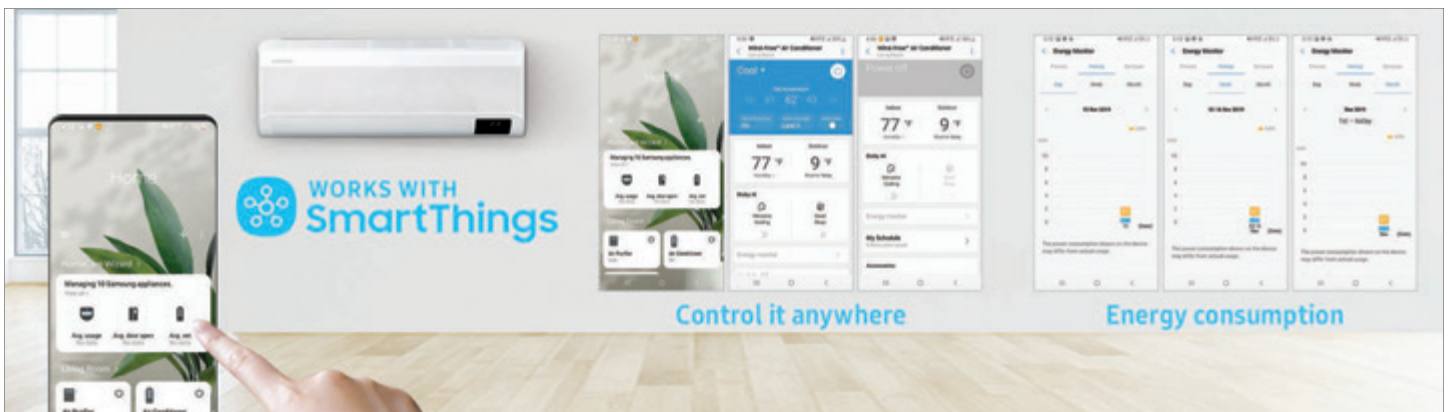
SmartThings Features

Scenes – Control multiple devices with a single tap or voice command through the SmartThings app[†]. A Scene can be used as a part of an Automation.

Automations – Control your devices without manual intervention. Automations can be set to run at certain times on certain days of the week or to trigger when another device reports a certain condition (such as detecting motion or a door or window opening).

Energy Monitoring – View daily, weekly, and monthly energy consumption for your A/C system (for reference use only and not revenue grade).

Geofencing – Detects when the smartphone you're carrying comes in and out of the range you set up on the map, and then triggers the different actions you've set to happen (such as turning your A/C off while you're away, or on when you arrive home).



¹One Wi-Fi Adapter can control all indoor units connected to a FJM system

²Wind-Free™ 2.0 and Quantum 2.0 units are Wi-Fi enabled as standard. An accessory Wi-Fi Adapter (MIM-H04UN) is required to control Slim Duct, Console, and Wind-Free™ Mini 4-Way Cassette units.

[†]Available for download on the Google™ Play store and App Store®. A network connection is required. Samsung application account is necessary.

Wind-Free™ Mini 4-Way Cassette

SPECIFICATIONS - 9,000 | 12,000 | 18,000

MODEL	US CODE		JNH09NDT	JNH12NDT	JNH18NDT
	MODEL NUMBER		AJ009TNNDCH/AA	AJ012TNNDCH/AA	AJ018TNNDCH/AA
PERFORMANCE	CAPACITY	COOLING	8,900 Btu/h	11,900 Btu/h	17,700 Btu/h
		HEATING	9,900 Btu/h	13,000 Btu/h	19,100 Btu/h
POWER	VOLTAGE	ø / V / Hz	1 / 208-230 / 60	1 / 208-230 / 60	1 / 208-230 / 60
	NOMINAL RUNNING CURRENT		0.51 A	0.52 A	0.53 A
UNIT DIMENSIONS	W X H X D		22 5/8 X 10 X 22 5/8 in.	22 5/8 X 10 X 22 5/8 in.	22 5/8 X 10 X 22 5/8 in.
	WEIGHT		25.40 lbs.	25.40 lbs.	26.00 lbs.
SOUND LEVEL	INDOOR	(L / M / H)	24 / 29 / 33 dB(A)	27 / 31 / 35 dB(A)	32 / 36 / 39 dB(A)
PIPE CONNECTIONS	INDOOR & OUTDOOR	LIQUID (FLARE)	1/4"	1/4"	1/4"
		SUCTION (FLARE)	3/8"	3/8"	1/2"
	DRAIN		1 1/4 in. OD, 1 in. ID	1 1/4 in. OD, 1 in. ID	1 1/4 in. OD, 1 in. ID
FAN	TYPE		Turbo (1)	Turbo (1)	Turbo (1)
	AIRFLOW	CFM (L / M / H)	244 / 290 / 318	261 / 318 / 371	261 / 318 / 371
FASCIA PANEL (SOLD SEPARATELY)	WIND-FREE™*	MODEL NUMBER	PC4SUFMUN	PC4SUFMUN	PC4SUFMUN
		L X W X H	24 3/8" X 24 3/8" X 2 1/4"	24 3/8" X 24 3/8" X 2 1/4"	24 3/8" X 24 3/8" X 2 1/4"
		WEIGHT	5.95 lbs.	5.95 lbs.	5.95 lbs.
ACCESSORIES	WIRED CONTROLLERS	ADVANCED	MWR-WG00UN	MWR-WG00UN	MWR-WG00UN
		TOUCHSCREEN	MWR-SH11UN	MWR-SH11UN	MWR-SH11UN
	WIRELESS CONTROLLER		AR-EH04U	AR-EH04U	AR-EH04U
	WI-FI ADAPTER ²		MIM-H04UN	MIM-H04UN	MIM-H04UN
	MOTION DETECTION SENSOR (MDS)		MCR-SMD	MCR-SMD	MCR-SMD
	THERMOSTAT ADAPTER (24VAC)		MIM-A60UN	MIM-A60UN	MIM-A60UN
	EXTERNAL TEMPERATURE SENSOR		MRW-TA	MRW-TA	MRW-TA
	EXTERNAL CONTACT CONTROL INTERFACE MODULE		MIM-B14	MIM-B14	MIM-B14
	CN83 PIGTAIL		DB39-01263A	DB39-01263A	DB39-01263A
	LINE SETS - INSULATED AND FLARED,		25' - ILS2506	25' - ILS2506	25' - ILS2507
	INTERCONNECT CABLES INCLUDED		50' - ILS5006	50' - ILS5006	50' - ILS5007



Product Registration Required
Conditions Apply



†The AHRI Certified® mark indicates Samsung's participation in the AHRI Certification program. For verification of individual certified products, go to www.ahridirectory.org.
*The Wind-Free™ unit delivers an air current that is under 0.15 m/s while in Wind-Free™ mode. Air velocity that is below 0.15 m/s is considered "still air" as defined by ASHRAE 55-2013 (American Society of Heating, Refrigerating, and Air-Conditioning Engineers).
² MIM-H04UN is only required for remote control of cassette, console, and duct indoor units. Only one per system is required.
Samsung HVAC maintains a policy of ongoing development, specifications are subject to change without notice.



Console

SPECIFICATIONS - 9,000 | 12,000 | 15,000 | 18,000

MODEL	US CODE		JNH09JDT	JNH12JDT	JNH15JDT	JNH18JDT
	MODEL NUMBER		AJ009TNJDCH/AA	AJ012TNJDCH/AA	AJ015TNJDCH/AA	AJ018TNJDCH/AA
PERFORMANCE	CAPACITY	COOLING	8,900 Btu/h	11,900 Btu/h	15,000 Btu/h	17,700 Btu/h
		HEATING	9,900 Btu/h	13,000 Btu/h	18,000 Btu/h	19,100 Btu/h
POWER	VOLTAGE	ø / V / Hz	1 / 208-230 / 60	1 / 208-230 / 60	1 / 208-230 / 60	1 / 208-230 / 60
	NOMINAL RUNNING CURRENT		0.25 A	0.29 A	0.35 A	0.35 A
UNIT DIMENSIONS	W X H X D		28 3/8 X 24 7/16 X 7 13/16 in.	28 3/8 X 24 7/16 X 7 13/16 in.	28 3/8 X 24 7/16 X 7 13/16 in.	28 3/8 X 24 7/16 X 7 13/16 in.
	WEIGHT		34.60 lbs.	34.60 lbs.	34.60 lbs.	34.60 lbs.
SOUND LEVEL	INDOOR	(L / M / H)	33 / 35 / 38 dB(A)	33 / 35 / 38 dB(A)	36 / 39 / 42 dB(A)	36 / 39 / 42 dB(A)
PIPE CONNECTIONS	INDOOR & OUTDOOR	LIQUID (FLARE)	1/4"	1/4"	1/4"	1/4"
		SUCTION (FLARE)	3/8"	3/8"	1/2"	1/2"
	DRAIN		1 in. ID	1 in. ID	1 in. ID	1 in. ID
FAN	TYPE		Turbo (1)	Turbo (1)	Turbo (1)	Turbo (1)
	AIRFLOW	CFM (L / M / H)	212 / 240 / 265	220 / 254 / 300	254 / 290 / 318	261 / 297 / 332
ACCESSORIES	WIRED CONTROLLERS	ADVANCED	MWR-WG00UN	MWR-WG00UN	MWR-WG00UN	MWR-WG00UN
		TOUCHSCREEN	MWR-SH11UN	MWR-SH11UN	MWR-SH11UN	MWR-SH11UN
	WIRELESS REMOTE CONTROLLER		AR-EH04U	AR-EH04U	AR-EH04U	AR-EH04U
	WI-FI ADAPTER ¹		MIM-H04UN	MIM-H04UN	MIM-H04UN	MIM-H04UN
	THERMOSTAT ADAPTER (24VAC)		MIM-A60UN	MIM-A60UN	MIM-A60UN	MIM-A60UN
	EXTERNAL TEMPERATURE SENSOR		MRW-TA	MRW-TA	MRW-TA	MRW-TA
	EXTERNAL CONTACT CONTROL INTERFACE MODULE		MIM-B14	MIM-B14	MIM-B14	MIM-B14
	CONDENSATE PUMP	ASPEN MINI ORANGE	ASP-MO-UNIV110-250	ASP-MO-UNIV110-250	ASP-MO-UNIV110-250	ASP-MO-UNIV110-250
		BLUE DIAMOND	BD-BLUE-230	BD-BLUE-230	BD-BLUE-230	BD-BLUE-230
	CN83 PIGTAIL		DB39-01263A	DB39-01263A	DB39-01263A	DB39-01263A
	LINE SETS - INSULATED AND FLARED, INTERCONNECT CABLES INCLUDED		25' - ILS2506	25' - ILS2506	25' - ILS2507	25' - ILS2507
			50' - ILS5006	50' - ILS5006	50' - ILS5007	50' - ILS5007



Product Registration Required
Conditions Apply



¹The AHRI Certified® mark indicates Samsung's participation in the AHRI Certification program. For verification of individual certified products, go to www.ahridirectory.org.
¹ MIM-H04UN is only required for remote control of cassette, console, and duct indoor units. Only one per system is required.

Samsung HVAC maintains a policy of ongoing development, specifications are subject to change without notice.

©2020 Samsung HVAC



Slim Duct

SPECIFICATIONS - 9,000 | 12,000 | 18,000

MODEL	US CODE		JNH09LDT	JNH12LDT	JNH18LDT
	MODEL NUMBER		AJ009TNLDCH/AA	AJ012TNLDCH/AA	AJ018TNLDCH/AA
PERFORMANCE	CAPACITY	COOLING	8,900 Btu/h	11,900 Btu/h	17,700 Btu/h
		HEATING	9,900 Btu/h	13,000 Btu/h	19,100 Btu/h
POWER	VOLTAGE	ø / V / Hz	1 / 208-230 / 60	1 / 208-230 / 60	1 / 208-230 / 60
	NOMINAL RUNNING CURRENT		0.45 A	0.45 A	0.45 A
UNIT DIMENSIONS	W X H X D		35 7/16 X 7 13/16 X 17 5/16 in.	35 7/16 X 7 13/16 X 17 5/16 in.	35 7/16 X 7 13/16 X 17 5/16 in.
	WEIGHT		41.70 lbs.	41.70 lbs.	41.70 lbs.
SOUND LEVEL	INDOOR	(L / M / H)	23 / 25 / 28 dB(A)	23 / 25 / 30 dB(A)	23 / 29 / 33 dB(A)
PIPE CONNECTIONS	INDOOR & OUTDOOR	LIQUID (FLARE)	1/4"	1/4"	1/4"
		SUCTION (FLARE)	3/8"	3/8"	1/2"
	DRAIN		1 1/4 in. OD, 1 in. ID	1 1/4 in. OD, 1 in. ID	1 1/4 in. OD, 1 in. ID
FAN	TYPE		Sirocco (2)	Sirocco (2)	Sirocco (2)
	AIRFLOW	CFM (L / M / H)	154 / 237 / 328	159 / 268 / 378	191 / 346 / 494
		STANDARD	0.08 in. WC	0.08 in. WC	0.08 in. WC
	STATIC PRESSURE		0.0 / 0.2 in. WC	0.0 / 0.2 in. WC	0.0 / 0.2 in. WC
ACCESSORIES	WIRED CONTROLLERS	ADVANCED	MWR-WG00UN	MWR-WG00UN	MWR-WG00UN
		TOUCHSCREEN	MWR-SH11UN	MWR-SH11UN	MWR-SH11UN
	WI-FI ADAPTER ¹		MIM-H04UN	MIM-H04UN	MIM-H04UN
	THERMOSTAT ADAPTER (24VAC)		MIM-A60UN	MIM-A60UN	MIM-A60UN
	EXTERNAL TEMPERATURE SENSOR		MRW-TA	MRW-TA	MRW-TA
	EXTERNAL CONTACT CONTROL INTERFACE MODULE		MIM-B14	MIM-B14	MIM-B14
	FILTER BOX		FB-SLIM2	FB-SLIM2	FB-SLIM2
	CN83 PIGTAIL		DB39-01263A	DB39-01263A	DB39-01263A
	LINE SETS - INSULATED AND FLARED, INTERCONNECT CABLES INCLUDED		25' - ILS2506	25' - ILS2506	25' - ILS2507
			50' - ILS5006	50' - ILS5006	50' - ILS5007



Product Registration Required
Conditions Apply



¹The AHRI Certified® mark indicates Samsung's participation in the AHRI Certification program. For verification of individual certified products, go to www.ahridirectory.org.

¹ MIM-H04UN is only required for remote control of cassette, console, and duct indoor units. Only one per system is required. Samsung HVAC maintains a policy of ongoing development, specifications are subject to change without notice.



Wind-Free™ 2.0

SPECIFICATIONS - 7,000 | 9,000 | 12,000

MODEL	US CODE		RNS07ABT	RNS09ABT	RNS12ABT
	MODEL NUMBER		AR07TSFABWKNCV	AR09TSFABWKNCV	AR12TSFABWKNCV
PERFORMANCE	CAPACITY	COOLING	7,000 Btu/h	9,000 Btu/h	12,000 Btu/h
		HEATING	7,500 Btu/h	11,000 Btu/h	12,000 Btu/h
POWER	VOLTAGE	ø / V / Hz	1 / 208-230 / 60	1 / 208-230 / 60	1 / 208-230 / 60
	NOMINAL RUNNING CURRENT		0.4 A	0.4 A	0.4 A
UNIT DIMENSIONS	W X H X D		35 X 11 3/4 X 8 7/16 in.	35 X 11 3/4 X 8 7/16 in.	35 X 11 3/4 X 8 7/16 in.
	WEIGHT		23.40 lbs.	23.40 lbs.	23.40 lbs.
SOUND LEVEL	INDOOR	(L / H)	23 / 38 dB(A)	23 / 38 dB(A)	23 / 39 dB(A)
PIPE CONNECTIONS	INDOOR & OUTDOOR	LIQUID (FLARE)	1/4"	1/4"	1/4"
		SUCTION (FLARE)	3/8"	3/8"	3/8"
FAN	TYPE		BLDC With Crossflow Fan	BLDC With Crossflow Fan	BLDC With Crossflow Fan
	AIRFLOW (L / M / H / TURBO)	COOLING (CFM)	258 / 297 / 323 / 350	258 / 298 / 337 / 364	250 / 301 / 340 / 378
		HEATING (CFM)	288 / 328 / 355 / 381	289 / 329 / 369 / 396	282 / 335 / 374 / 413
ACCESSORIES	WIRED CONTROLLERS ¹	ADVANCED	MWR-WG00UN	MWR-WG00UN	MWR-WG00UN
		TOUCHSCREEN	MWR-SH11UN	MWR-SH11UN	MWR-SH11UN
	WIRED CONTROLLER SUB-PCB		MIM-A00UN	MIM-A00UN	MIM-A00UN
	THERMOSTAT ADAPTER (24VAC)		MIM-A60UN	MIM-A60UN	MIM-A60UN
	EXTERNAL TEMPERATURE SENSOR		MRW-TA	MRW-TA	MRW-TA
	EXTERNAL CONTACT CONTROL INTERFACE MODULE ²		MIM-B14	MIM-B14	MIM-B14
	CONDENSATE PUMP	ASPEN MINI ORANGE	ASP-MO-UNIV110-250	ASP-MO-UNIV110-250	ASP-MO-UNIV110-250
		BLUE DIAMOND	BD-BLUE-230	BD-BLUE-230	BD-BLUE-230
	LINE SETS - INSULATED AND FLARED, INTERCONNECT CABLES INCLUDED		25' - ILS2506 50' - ILS5006	25' - ILS2506 50' - ILS5006	25' - ILS2506 50' - ILS5006

SPECIFICATIONS - 15,000 | 18,000 | 24,000

MODEL	US CODE		RNS15ABT	RNS18ABT	RNS24ABT
	MODEL NUMBER		AR15TSFABWKNCV	AR18TSFABWKNCV	AR24TSFABWKNCV
PERFORMANCE	CAPACITY	COOLING	15,000 Btu/h	18,000 Btu/h	21,000 Btu/h
		HEATING	18,000 Btu/h	20,600 Btu/h	27,500 Btu/h
POWER	VOLTAGE	ø / V / Hz	1 / 208-230 / 60	1 / 208-230 / 60	1 / 208-230 / 60
	NOMINAL RUNNING CURRENT		0.4 A	0.5 A	0.5 A
UNIT DIMENSIONS	W X H X D		35 X 11 3/4 X 8 7/16 in.	41 17/32 X 11 3/4 X 8 7/16 in.	41 17/32 X 11 3/4 X 8 7/16 in.
	WEIGHT		23.40 lbs.	27.60 lbs.	27.60 lbs.
SOUND LEVEL	INDOOR	(L / H)	23 / 40 dB(A)	25 / 42 dB(A)	28 / 47 dB(A)
PIPE CONNECTIONS	INDOOR & OUTDOOR	LIQUID (FLARE)	1/4"	1/4"	1/4"
		SUCTION (FLARE)	3/8"	1/2"	5/8"
FAN	TYPE		BLDC With Crossflow Fan	BLDC With Crossflow Fan	BLDC With Crossflow Fan
	AIRFLOW (L / M / H / TURBO)	COOLING (CFM)	260 / 313 / 366 / 406	427 / 481 / 536 / 572	484 / 560 / 636 / 711
		HEATING (CFM)	279 / 331 / 383 / 422	447 / 501 / 556 / 592	490 / 566 / 643 / 719
ACCESSORIES	WIRED CONTROLLERS ¹	ADVANCED	MWR-WG00UN	MWR-WG00UN	MWR-WG00UN
		TOUCHSCREEN	MWR-SH11UN	MWR-SH11UN	MWR-SH11UN
	WIRED CONTROLLER SUB-PCB		MIM-A00UN	MIM-A00UN	MIM-A00UN
	THERMOSTAT ADAPTER (24VAC)		MIM-A60UN	MIM-A60UN	MIM-A60UN
	EXTERNAL TEMPERATURE SENSOR		MRW-TA	MRW-TA	MRW-TA
	EXTERNAL CONTACT CONTROL INTERFACE MODULE ²		MIM-B14	MIM-B14	MIM-B14
	CONDENSATE PUMP	ASPEN MINI ORANGE	ASP-MO-UNIV110-250	ASP-MO-UNIV110-250	ASP-MO-UNIV110-250
		BLUE DIAMOND	BD-BLUE-230	BD-BLUE-230	BD-BLUE-230
	LINE SETS - INSULATED AND FLARED, INTERCONNECT CABLES INCLUDED		25' - ILS2506 50' - ILS5006	25' - ILS2507 50' - ILS5007	25' - ILS2509 50' - ILS5009



Product Registration Required
Conditions Apply



The AHRI Certified® mark indicates Samsung's participation in the AHRI Certification program. For verification of individual certified products, go to www.ahridirectory.org.
*The Wind-Free™ unit delivers an air current that is under 0.15 m/s while in Wind-Free™ mode. Air velocity that is below 0.15 m/s is considered "still air" as defined by ASHRAE 55-2013 (American Society of Heating, Refrigerating, and Air-Conditioning Engineers).

¹ Sub-PCB model MIM-A00UN is required when connecting optional wired controllers

² When applying MIM-B14 external contact control interface module, MIM-A00UN wired controller sub-PCB is required.
Samsung HVAC maintains a policy of ongoing development, specifications are subject to change without notice.



Quantum 2.0

SPECIFICATIONS - 7,000 | 9,000 | 12,000

MODEL	US CODE		RNS07YBT	RNS09YBT	RNS12YBT
	MODEL NUMBER		AR07TSFYBWKNCV	AR09TSFYBWKNCV	AR12TSFYBWKNCV
PERFORMANCE	CAPACITY	COOLING	7,000 Btu/h	9,000 Btu/h	12,000 Btu/h
		HEATING	7,500 Btu/h	11,000 Btu/h	12,000 Btu/h
POWER	VOLTAGE	ø / V / Hz	1 / 208-230 / 60	1 / 208-230 / 60	1 / 208-230 / 60
	NOMINAL RUNNING CURRENT		0.3 A	0.3 A	0.3 A
UNIT DIMENSIONS	W X H X D		32 5/16 X 11 3/4 X 8 7/16 in.	32 5/16 X 11 3/4 X 8 7/16 in.	32 5/16 X 11 3/4 X 8 7/16 in.
	WEIGHT		20.10 lbs.	20.10 lbs.	20.10 lbs.
SOUND LEVEL	INDOOR	(L / H)	23 / 37 dB(A)	23 / 37 dB(A)	23 / 38 dB(A)
PIPE CONNECTIONS	INDOOR & OUTDOOR	LIQUID (FLARE)	1/4"	1/4"	1/4"
		SUCTION (FLARE)	3/8"	3/8"	3/8"
FAN	TYPE		BLDC With Crossflow Fan	BLDC With Crossflow Fan	BLDC With Crossflow Fan
	AIRFLOW (L / M / H / TURBO)	COOLING (CFM)	309 / 322 / 336 / 350	307 / 335 / 350 / 364	309 / 337 / 364 / 378
		HEATING (CFM)	340 / 354 / 368 / 381	339 / 367 / 381 / 396	343 / 371 / 399 / 413
ACCESSORIES	WIRED CONTROLLERS ¹	ADVANCED	MWR-WG00UN	MWR-WG00UN	MWR-WG00UN
		TOUCHSCREEN	MWR-SH11UN	MWR-SH11UN	MWR-SH11UN
	WIRED CONTROLLER SUB-PCB		MIM-A00UN	MIM-A00UN	MIM-A00UN
	THERMOSTAT ADAPTER (24VAC)		MIM-A60UN	MIM-A60UN	MIM-A60UN
	EXTERNAL TEMPERATURE SENSOR		MRW-TA	MRW-TA	MRW-TA
	EXTERNAL CONTACT CONTROL INTERFACE MODULE ²		MIM-B14	MIM-B14	MIM-B14
	CONDENSATE PUMP	ASPEN MINI ORANGE	ASP-MO-UNIV110-250	ASP-MO-UNIV110-250	ASP-MO-UNIV110-250
		BLUE DIAMOND	BD-BLUE-230	BD-BLUE-230	BD-BLUE-230
	LINE SETS - INSULATED AND FLARED, INTERCONNECT CABLES INCLUDED		25' - ILS2506 50' - ILS5006	25' - ILS2506 50' - ILS5006	25' - ILS2506 50' - ILS5006

SPECIFICATIONS - 15,000 | 18,000 | 24,000

MODEL	US CODE		RNS15YBT	RNS18YBT	RNS24YBT
	MODEL NUMBER		AR15TSFYBWKNCV	AR18TSFYBWKNCV	AR24TSFYBWKNCV
PERFORMANCE	CAPACITY	COOLING	15,000 Btu/h	18,000 Btu/h	22,000 Btu/h
		HEATING	18,000 Btu/h	21,000 Btu/h	24,000 Btu/h
POWER	VOLTAGE	ø / V / Hz	1 / 208-230 / 60	1 / 208-230 / 60	1 / 208-230 / 60
	NOMINAL RUNNING CURRENT		0.4 A	0.5 A	0.5 A
UNIT DIMENSIONS	W X H X D		35 X 11 3/4 X 8 7/16 in.	41 1/2 X 11 13/16 X 8 7/16 in.	41 1/2 X 11 13/16 X 8 7/16 in.
	WEIGHT		23.40 lbs.	25.40 lbs.	25.40 lbs.
SOUND LEVEL	INDOOR	(L / H)	25 / 41 dB(A)	28 / 41 dB(A)	30 / 45 dB(A)
PIPE CONNECTIONS	INDOOR & OUTDOOR	LIQUID (FLARE)	1/4"	1/4"	1/4"
		SUCTION (FLARE)	3/8"	1/2"	5/8"
FAN	TYPE		BLDC With Crossflow Fan	BLDC With Crossflow Fan	BLDC With Crossflow Fan
	AIRFLOW (L / M / H / TURBO)	COOLING (CFM)	260 / 313 / 366 / 406	401 / 435 / 469 / 486	465 / 525 / 584 / 623
		HEATING (CFM)	280 / 332 / 384 / 423	465 / 525 / 584 / 623	470 / 529 / 589 / 629
ACCESSORIES	WIRED CONTROLLERS ¹	ADVANCED	MWR-WG00UN	MWR-WG00UN	MWR-WG00UN
		TOUCHSCREEN	MWR-SH11UN	MWR-SH11UN	MWR-SH11UN
	WIRED CONTROLLER SUB-PCB		MIM-A00UN	MIM-A00UN	MIM-A00UN
	THERMOSTAT ADAPTER (24VAC)		MIM-A60UN	MIM-A60UN	MIM-A60UN
	EXTERNAL TEMPERATURE SENSOR		MRW-TA	MRW-TA	MRW-TA
	EXTERNAL CONTACT CONTROL INTERFACE MODULE ²		MIM-B14	MIM-B14	MIM-B14
	CONDENSATE PUMP	ASPEN MINI ORANGE	ASP-MO-UNIV110-250	ASP-MO-UNIV110-250	ASP-MO-UNIV110-250
		BLUE DIAMOND	BD-BLUE-230	BD-BLUE-230	BD-BLUE-230
	LINE SETS - INSULATED AND FLARED, INTERCONNECT CABLES INCLUDED		25' - ILS2506 50' - ILS5006	25' - ILS2507 50' - ILS5007	25' - ILS2509 50' - ILS5009



Product Registration Required
Conditions Apply



¹The AHRI Certified® mark indicates Samsung's participation in the AHRI Certification program. For verification of individual certified products, go to www.ahridirectory.org.




² Sub-PCB model MIM-A00UN is required when connecting optional wired controllers

² When applying MIM-B14 external contact control interface module, MIM-A00UN wired controller sub-PCB is required.
Samsung HVAC maintains a policy of ongoing development, specifications are subject to change without notice.



Free Joint Multi (FJM)

SPECIFICATIONS - 18,000 | 24,000 | 36,000 | 48,000

MODEL	US CODE		JXH20J2T	JXH24J3T	JXH36J4T	JXH48J5T
	MODEL NUMBER		AJ020TXJ2CH/AA	AJ024TXJ3CH/AA	AJ036TXJ4CH/AA	AJ048TXJ5CH/AA
TONS	NOMINAL		1.5	1.83	2.67	3.92
IDU CONNECTION	QUANTITY		2	2 - 3	2 - 4	2 - 5
PERFORMANCE	CAPACITY (STANDARD / MAX.)	COOLING	18,000 / 18,000 Btu/h	22,000 / 22,000 Btu/h	32,000 / 36,000 Btu/h	47,000 / 48,200 Btu/h
		HEATING	22,000 / 26,400 Btu/h	25,000 / 29,600 Btu/h	36,000 / 42,000 Btu/h	48,500 / 53,600 Btu/h
	MIN. COOLING CAPACITY		5,500 Btu/h	6,500 Btu/h	8,500 Btu/h	8,500 Btu/h
	MIN. HEATING CAPACITY		3,500 Btu/h	4,300 Btu/h	7,600 Btu/h	7,000 Btu/h
	SEER (DUCTED / MIXED / NON-DUCTED)		18.00 / 18.75 / 19.50	17.00 / 18.00 / 19.00	16.50 / 18.00 / 19.50	16.00 / 17.58 / 19.70
	EER (DUCTED / MIXED / NON-DUCTED)		11.10 / 11.90 / 12.70	10.10 / 11.40 / 12.70	9.30 / 10.90 / 12.50	8.60 / 9.55 / 10.50
	HSPF (DUCTED / MIXED / NON-DUCTED)		9.50 / 9.75 / 10.00	9.00 / 9.50 / 10.00	9.00 / 9.50 / 10.00	9.20 / 9.75 / 10.30
POWER	VOLTAGE	ø / V / Hz	1 / 208-230V / 60Hz	1 / 208-230V / 60Hz	1 / 208-230V / 60Hz	1 / 208-230V / 60Hz
	MAX. BREAKER		20.0 A	25.0 A	30.0 A	40.0 A
	MIN. CIRCUIT AMPACITY		16.5 A	19.5 A	26.0 A	37.0 A
DIMENSIONS	W X H X D		34 5/8 x 31 7/16 x 12 3/16 in.	34 5/8 x 31 7/16 x 12 3/16 in.	37 X 39 5/16 X 13 in.	37 X 47 5/8 X 13 in.
	WEIGHT		116.80 lbs.	125.70 lbs.	168.70 lbs.	192.90 lbs.
SOUND LEVEL	OUTDOOR	COOLING / HEATING (MAX.)	48 / 51 dB(A)	48 / 51 dB(A)	54 / 56 dB(A)	52 / 55 dB(A)
OPERATING TEMPERATURE	COOLING		14.0 ~ 114.8°F (-10.0 ~ 46.0°C)	14.0 ~ 114.8°F (-10.0 ~ 46.0°C)	14.0 ~ 114.8°F (-10.0 ~ 46.0°C)	14.0 ~ 114.8°F (-10.0 ~ 46.0°C)
	HEATING		5.0 ~ 75.0°F (-15.0 ~ 24.0°C)	5.0 ~ 75.0°F (-15.0 ~ 24.0°C)	5.0 ~ 75.0°F (-15.0 ~ 24.0°C)	5.0 ~ 75.0°F (-15.0 ~ 24.0°C)
PIPE CONNECTIONS	OUTDOOR	LIQUID (FLARE)	1/4" X 2	1/4" X 3	1/4" X 4	1/4" X 5
		SUCTION (FLARE)	3/8" X 1 + 1/2" X 1	3/8" X 1 + 1/2" X 2	3/8" X 2 + 1/2" X 2	3/8" X 2 + 1/2" X 3
	PIPE ADAPTERS (INCLUDED)		1 - 1/2" X 3/8"	2 - 1/2" X 3/8"	2 - 1/2" X 3/8", 2 - 1/2" X 5/8"	3 - 1/2" X 3/8", 2 - 1/2" X 5/8"
	MAX. LINE SET LENGTH (TOTAL)		164 ft.	230 ft.	230 ft.	230 ft.
	MAX. LINE SET LENGTH (INDIVIDUAL)		82 ft.	82 ft.	82 ft.	82 ft.
	MAX. VERTICAL SEPARATION	ODU TO IDU	49 ft.	49 ft.	49 ft.	49 ft.
		IDU TO IDU	25 ft.	25 ft.	25 ft.	25 ft.
REFRIGERANT	TYPE		R410A	R410A	R410A	R410A
	CONTROL METHOD		Electronic Expansion Valve	Electronic Expansion Valve	Electronic Expansion Valve	Electronic Expansion Valve
	FACTORY CHARGE		77.6 oz.	93.5 oz.	109.3 oz.	134.0 oz.
	CHARGED FOR		98.4 ft.	131 ft.	131 ft.	164 ft.
COMPRESSOR	TYPE		Twin BLDC Rotary Inverter	Twin BLDC Rotary Inverter	Twin BLDC Rotary Inverter	Twin BLDC Rotary Inverter
CONDENSER FAN	MOTOR		BLDC With Propeller Fan (1)	BLDC With Propeller Fan (1)	BLDC With Propeller Fan (1)	BLDC With Propeller Fan (2)
	CFM (MAX.)		1,667	1,667	2,493	3,885
ACCESSORIES	WALL BRACKET		CKN-250	CKN-250	CKN-250	CKN-250
	WIND BAFFLE	FRONT	Refer to technical documents			
		BACK	Refer to technical documents			
CERTIFICATIONS	ENERGY STAR® CERTIFIED		 Non-Ducted Indoor Units Only	 Non-Ducted Indoor Units Only	 Non-Ducted Indoor Units Only	-



Product Registration Required
Conditions Apply



πThe AHRI Certified® mark indicates Samsung's participation in the AHRI Certification program. For verification of individual certified products, go to www.ahridirectory.org. ΔSelect models are ENERGY STAR® labeled. Proper sizing and installation of equipment is critical to achieve performance. Split system air conditioners and heat pumps (excluding ductless systems) must match with appropriate coil components to meet ENERGY STAR® criteria. Ask your contractor for details or visit www.energystar.gov. Samsung HVAC maintains a policy of ongoing development, specifications are subject to change without notice.



FJM Max Heat®

SPECIFICATIONS - 20,000 | 24,000 | 30,000 | 36,000



MODEL	US CODE MODEL NUMBER	JXH20S3T AJ020TXS3CH/AA	JXH24S4T AJ024TXS4CH/AA	JXH30S4T AJ030TXS4CH/AA	JXH36S4T AJ036TXS4CH/AA
TONS	NOMINAL	1.75	2	2.5	3
IDU CONNECTION	QUANTITY	2 - 3	2 - 4	2 - 4	2 - 4
PERFORMANCE	CAPACITY (STANDARD / MAX.)	COOLING 21,000 / 21,000 Btu/h	25,000 / 25,000 Btu/h	28,400 / 28,400 Btu/h	34,000 / 39,600 Btu/h
		HEATING 22,000 / 22,000 Btu/h	25,000 / 25,000 Btu/h	28,600 / 28,600 Btu/h	36,600 / 36,600 Btu/h
	MIN. COOLING CAPACITY	7,000 Btu/h	7,000 Btu/h	7,000 Btu/h	7,000 Btu/h
	MIN. HEATING CAPACITY	7,500 Btu/h	7,500 Btu/h	7,500 Btu/h	7,500 Btu/h
	MAX. HEATING CAPACITY @ 5.0°F (-15.0°C)(BTU/H)	22,000 Btu/h	25,000 Btu/h	28,600 Btu/h	36,600 Btu/h
	MAX. HEATING CAPACITY @ -13.0°F (-25.0°C)(BTU/H)	15,380 Btu/h	17,480 Btu/h	20,000 Btu/h	25,590 Btu/h
	SEER (DUCTED / MIXED / NON-DUCTED)	15.50 / 16.75 / 18.00	16.00 / 17.50 / 19.00	17.00 / 18.00 / 19.00	18.00 / 19.00 / 20.00
	EER (DUCTED / MIXED / NON-DUCTED)	11.40 / 12.45 / 13.50	10.60 / 11.80 / 13.00	10.50 / 11.50 / 12.50	11.00 / 11.75 / 12.50
POWER	VOLTAGE	1 / 208-230V / 60Hz	1 / 208-230V / 60Hz	1 / 208-230V / 60Hz	1 / 208-230V / 60Hz
	MAX. BREAKER	30.0 A	30.0 A	30.0 A	40.0 A
	MIN. CIRCUIT AMPACITY	25.5 A	26.0 A	26.0 A	36.5 A
DIMENSIONS	W X H X D	37 X 39 5/16 X 13 in.	37 X 39 5/16 X 13 in.	37 X 39 5/16 X 13 in.	37 X 47 5/8 X 13 in.
	WEIGHT	170.90 lbs.	173.10 lbs.	173.10 lbs.	192.90 lbs.
SOUND LEVEL	OUTDOOR	COOLING / HEATING (MAX.)	54 / 58 dB(A)	54 / 58 dB(A)	54 / 58 dB(A)
OPERATING TEMPERATURE	COOLING	14.0 ~ 114.8°F (-10.0 ~ 46.0°C)	14.0 ~ 114.8°F (-10.0 ~ 46.0°C)	14.0 ~ 114.8°F (-10.0 ~ 46.0°C)	14.0 ~ 114.8°F (-10.0 ~ 46.0°C)
	HEATING	-13.0 ~ 75.0°F (-25.0 ~ 24.0°C)	-13.0 ~ 75.0°F (-25.0 ~ 24.0°C)	-13.0 ~ 75.0°F (-25.0 ~ 24.0°C)	-13.0 ~ 75.0°F (-25.0 ~ 24.0°C)
PIPE CONNECTIONS	OUTDOOR	LIQUID (FLARE)	1/4" X 3	1/4" X 4	1/4" X 4
		SUCTION (FLARE)	3/8" X 3	3/8" X 1 + 1/2" X 2	3/8" X 2 + 1/2" X 2
	PIPE ADAPTERS (INCLUDED)		1 - 3/8" X 1/2"	3/8" X 2 + 1/2" X 2	2 - 1/2" X 3/8" 2 - 1/2" X 5/8"
	MAX. LINE SET LENGTH (TOTAL)		164 ft.	230 ft.	230 ft.
	MAX. INDIVIDUAL LINE SET LENGTH		82 ft.	82 ft.	82 ft.
	MAX. VERTICAL SEPARATION	ODU TO IDU	49 ft.	49 ft.	49 ft.
		IDU TO IDU	25 ft.	25 ft.	25 ft.
REFRIGERANT	TYPE		R410A	R410A	R410A
	CONTROL METHOD		Electronic Expansion Valve	Electronic Expansion Valve	Electronic Expansion Valve
	FACTORY CHARGE		119.9 oz.	119.9 oz.	127 oz.
	CHARGED FOR		131 ft.	131 ft.	164 ft.
COMPRESSOR	TYPE		Twin BLDC Rotary Inverter	Twin BLDC Rotary Inverter	Twin BLDC Rotary Inverter
CONDENSER FAN	MOTOR		BLDC With Propeller Fan (1)	BLDC With Propeller Fan (1)	BLDC With Propeller Fan (2)
	CFM (MAX.)		2,493	2,943	3,885
ACCESSORIES	WALL BRACKET (FOR OUTDOOR UNIT)		CKN-250	CKN-250	CKN-250
	WIND BAFFLE / GUARD	FRONT	Refer to technical documents		
		BACK	Refer to technical documents		
CERTIFICATIONS	ENERGY STAR® CERTIFIED		Non-Ducted Indoor Units Only	Non-Ducted Indoor Units Only	Non-Ducted Indoor Units Only



Product Registration Required
Conditions Apply



πThe AHRI Certified® mark indicates Samsung's participation in the AHRI Certification program. For verification of individual certified products, go to www.ahridirectory.org.
ΔSelect models are ENERGY STAR® labeled. Proper sizing and installation of equipment is critical to achieve performance. Split system air conditioners and heat pumps (excluding ductless systems) must match with appropriate coil components to meet ENERGY STAR® criteria. Ask your contractor for details or visit www.energystar.gov.
Samsung HVAC maintains a policy of ongoing development, specifications are subject to change without notice.



SAMSUNG

SamsungHVAC.com
FJMBR 09.2020-V2